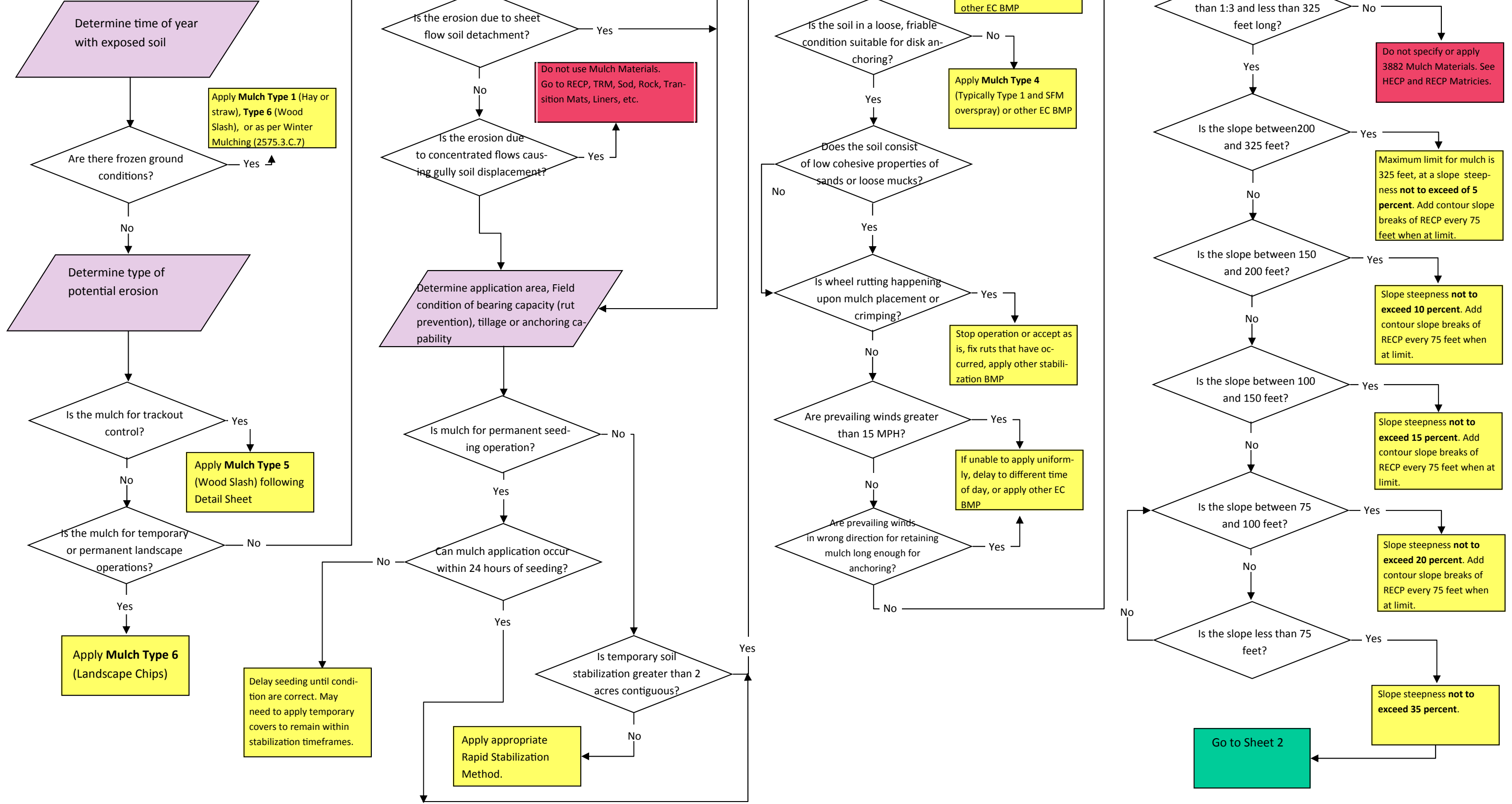


Temporary Exposed Soil Stabilization:
3882 Mulch Materials
 Flow Chart Decision Matrix
 Sheet 1.

2014dlsV2



Temporary Exposed Soil Stabilization:
3882 Mulch Materials
 Flow Chart Decision Matrix
 Sheet 2.

2014dlsV2

Continued from
 Sheet 1.

Determine desired performance, functional longevity of Mulch Materials

Does Erosion prevention need to last less than 3 weeks?

Yes → Go to HECP, or hand install **Mulch Type 1**

No
 Erosion Prevention less than 3 months?

Yes → Any Mulch Material Type acceptable within performance limits.

No
 Erosion prevention less than 9 months?

Yes → Any Mulch Material Type acceptable within performance limits.

No
 Erosion Prevention more than 12 months?

Yes → Erosion Prevention Permanent?

Erosion Prevention Permanent?

Yes → Apply **Mulch Type 9** Aggregate

No → Apply **Mulch Type 5** (Wood Slash) , 25 tons per acre, slope not to exceed 33 percent and 100 feet long. Go to RECP.

No
 Doe the erosion prevention need to last overwinter?

Yes → Any Mulch Material Type acceptable within performance limits.

No → Apply **Mulch Type 5** (Wood Slash) , 25 tons per acre, slope not to exceed 33 percent and 100 feet long. Go to RECP.

Determine type of seed mixture (Urban sods, non-native, native, landscape plants).

Will the area require permanent vegetation over the exposed area?

No → Is safety from thrown or mowed aggregate a potential problem?

No → Specify and Apply **Mulch Type 9** Aggregate

Yes → Specify and Apply **Synthetic or coir landscape mat**

Yes
 Is the mulch application for non-native seed mixtures of 1x-xxx or 2x-xxx?

No → Is there a need for supplemental seed as part of the mulch material?

Yes → Specify and apply **Mulch Type 8** (Prairie Hay)

Yes
 Would there be a problem if weeds were introduced in the mulch?

Yes → Specify and apply **Mulch Type 3** (Certified Weed Free grain straw or native grass)

No → Specify and apply **Mulch Type 1 (hay or straw)**

For condition not as above, Contact OES